

# OZARK DIVISION NEWSLETTER DECEMBER 2023

Welcome to the fourth quarter edition of the Ozark Division Newsletter. The first article in this quarter's Newsletter is an article on Louis Hertz written by David Osborn, Gateway Chapter President. I think you will agree that Louis was a giant in toy train history. Our second article is an interview with the Ozark Division's new Secretary/Treasurer, Jim Bryan. You will learn about Jim's interest in collecting and operating trains and a special purchase he made at York. But first a word from our current president, Rob English.



## New Year, New Possibilities

Well, it's back to work for some of us... winding down from the train high at Christmastime for all of us. Hope you had a great season of trains this Holiday time. I had a wonderful time running trains with my sons on the layout... and around the tree, as well as traveling to see some collectors and hearing their tall tales!

New possibilities.... due to the last-minute cancellation of the Great St Louis Train Show, we have decided to take a hard look at the show and perhaps changing venues etc. to make the show better, stay tuned for further developments.

New Possibilities... speaking of this, encourage young folks to get involved at the Chapter (Gateway, Heart of America, and Mid Missouri and Ozark Division levels. There are some fun events coming up in each chapter!

Happy Training!

Rob English 96-43303 – President, Ozark Division

## Louis Hertz by David Osborn 75-7280 – President, Gateway Chapter

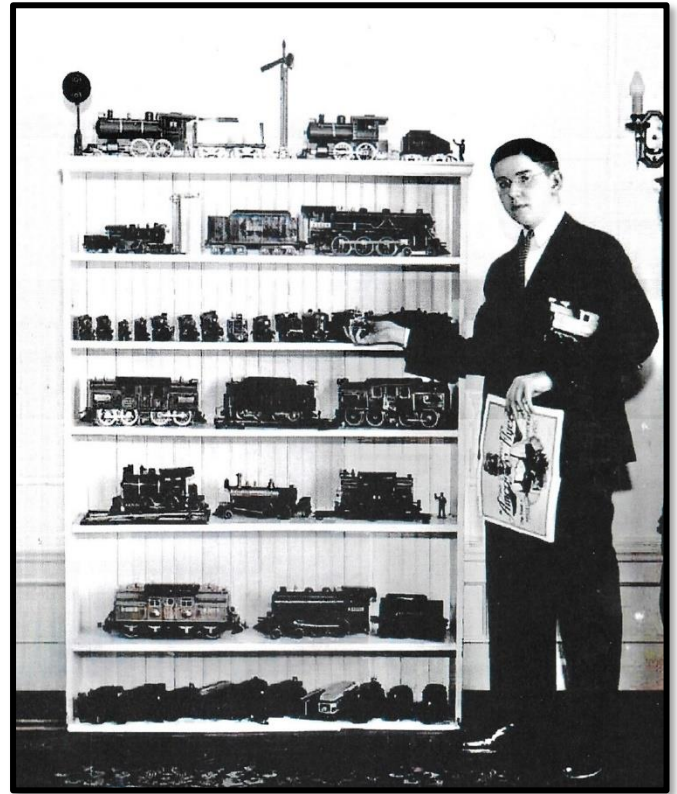
It's been over 25 years since Louis Hertz died and I have found that many of today's train collectors do not know of Louis Hertz or the significant contributions he made to train collecting and the historical documentation of tinsplate trains through the many books and magazine articles he authored. He believed historical information should be shared among collectors. Therefore, I thought it would be appropriate to both introduce and reintroduce Louis Hertz who was a pioneer in the train collecting world.

Louis was born in 1922 in New York city. As a very young boy his father bought him a clockwork train set which he could only watch as it went around the track. In later years he received an Ives clockwork set which he treasured his entire life and represented the beginning of his train collecting hobby.

His continuing interest in trains was fueled by the walks he took with his dad to observe the activity of steam locomotives and freight cars in the New York Central yards near his home. Additionally in the late 1920's, he made many in person visits to the Toy Center at 300 Fifth Ave. where Ives, American Flyer (pre-Gilbert), Hafner, Dorfan had showrooms as well Lionel's on 26<sup>th</sup> Street.

In the early 1930s model train collecting was in its infancy. Collectors were few and they pursued collectible trains and information about trains in isolation from each other. There were no ways to find and communicate with each other except by mail. Collecting was not organized as it is today into large groups such as the Train Collectors Association, the Toy Train Operating Society and Lionel Collectors Club among others. There were no train meets or other large gatherings of fellow collectors. The availability of the internet was still over 60 years away. Lou tried to solve the problem by attempting to organize train collectors into collecting clubs. His first attempt was conceived in the late 1930s and was to be called the National Tinsplate Association. It was never more than an idea which did not come to fruition. The second organization he founded was the Standard Gauge Association which existed from the late 1940s into the early 1960s. Members still communicated by US mail but now they knew who and where other collectors lived.

The train magazine landscape was equally barren at the beginning of the 1930's but was about to bloom exponentially by the end of the decade. The first model train magazine published was Lionel Magazine which began in 1930. It was followed in March 1933 by Model Craftsman (forerunner of Railroad Model Craftsman) and by Model Railroader in January 1934. By 1935 Hertz, at age 13, had his first article published in Model Railroader titled "The History of Tinsplate Railroads". This was followed in 1937 by several articles in Model Craftsman including "The Story of Tinsplate". Lou and his train collection were written about in 1937 in American Boy magazine and Railroad Stories magazine. By the end of the decade Hertz had published over 80 articles in



*Louis Hertz 1937*

6 different nationally distributed model railroading magazines. Although only a teenager he had the maturity to sense the responsibility of his writings being accurate. Thus, he was a true pioneer in the sharing of great quantities of historical information about tinsplate trains. He published over 400 articles in Model Railroader, Railroad Model Craftsman, Electric Trains, Model Builder, Miniature Railroading, Model Railroaders Digest, Classic Toy Trains, NMRA Bulletin and the Standard Gauge Association Journal. This included a long running column in Model Craftsman which began in 1938 and continued through 1951 with a brief interlude during World War II. It was titled "Along the Tinsplate Tracks". "Antique Collector and Historian" is another monthly column he authored in Miniature Railroading and Model Railroaders Digest.

In addition to authoring all those articles Louis served as editor of two magazines devoted to tinsplate trains. These were Miniature Railroading in 1938 and Model Railroaders Digest in 1939 and 1940. He accomplished all this before he was 20 years of age.

His first book entitled "Miniature Railroad Service and Repair Manual" was published in 1939. In it he describes in general how to make repairs to locomotive motors and reversing switches. That is followed by specific repair instructions by different manufacturers including American Flyer, Bing, Bub, Carlisle & Finch and Lionel among many more. Over the 30 years he authored 15 more books including the following:

- Model Railroad Conversion Manual which dealt with converting tinsplate locomotives to various wheel configurations
- Riding the Tinsplate Rails covering tinsplate train history and collecting
- The Handbook of Old American Toys which describes the history of toys.
- Mechanical Toy Banks lays out the history and collectability of toy banks.
- Messrs. Ives of Bridgeport which tells the History of the Ives Company
- The Complete Book of Model Railroading covers all phases of the hobby.
- New Roads to Adventure in Model Railroading spurs existing operators to try new ideas.
- Making Your Model Railroad is aimed at stimulating grade schoolboys to build model railroads
- Advanced Model Railroading describes new ideas and methods for model railroading.
- Collecting Model Trains, the seminal work on tinsplate collecting
- The Complete Book of Model Raceways and Roadways covers approaches for collecting.
- The Complete Book of Model Aircraft, Spacecraft and Rockets
- Antique Collecting for Men gives insight to various types of collectible antiques.
- The Toy Collector provides history, techniques and methods for toy collecting.
- The Complete Book of Building and Collecting Model Automobiles

There are many books and magazine articles on collecting tinsplate trains and their history available today. Most are by modern day authors. Louis Hertz is but one of many authors but certainly one whose writings are worth reading. Their value is defined by the fact they were authored by a person who lived through the history and watched it happen.



Dedication of Ives factory plaque by Standard Gauge Association. Photo shows left to right: Virginia Cook nee Ives, Edward C. Ives, unknown woman with pocketbook, Royal Ives, Alice Ives, Louis Hertz, and Mayor Tedesco of Bridgeport Conn.



### Classic Toy Trains Announces Quarterly Publication

In the Winter 2023 issue of the Classic Toy Trains magazine, the following announcement appeared. “Since 1987 Classic Toy Trains has been proud to present the finest O and S gauge layouts, remarkable collections of prewar and postwar trains, handy insights and instructions on projects of every kind, and in-depth reviews of significant and ground-breaking products.

While the excellence of our published articles has remained consistent in the pages of CTT since its inception, inevitable changes in the publishing industry have caused us to shift our footing once again. As of this Winter 2023 issue, CTT will begin new life as a quarterly publication.”

“Changes in the digital media continue to shape how we as society consume information.... It is no accident that three years ago we launched Trains.com our membership exclusive website.”

**Jim Bryan 05-58519, Secretary/Treasurer Ozark Division**

Jim was born and raised in Indiana but has been a resident of Saint Louis since 1976. He has two grown daughters, 3 Grandkids and 3 Welch Corgi dogs but not all at once. (one is a pup)! In 2013 he retired after 34 years with Sigma-Aldrich, an American chemical, life science, and biotechnology company headquartered in Saint Louis. He holds both BS and MS degrees from Ball State University in Muncie, Indiana.

Besides his interest in trains, Jim is a car nut. His dad first took him to Time Trials at the Indianapolis Motor Speedway in 1964...the transition year from front engine roadsters to rear engine race cars. He attended his first Indy 500 with his brother and college friends in 1971. Jim was 19 years old at that time and has not missed an Indy 500 since then.

Jim received his first train set at 3 years old. It looked like the picture of the Marx wind up set at right. In 1955, when Jim was 4 years old, He received a Lionel freight set with a 2035 engine. Jim played with his Lionel set for many years, but as he got busy in high school activities, his set was put away for roughly 30 years.

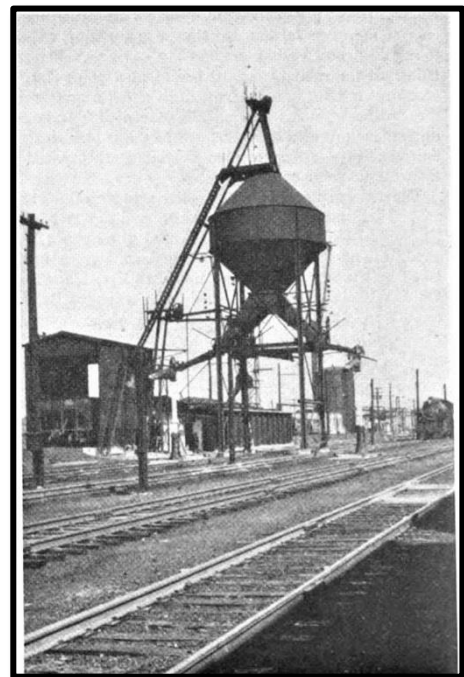


*1953 Marx Wind-Up Set*

Jim recounts that as he was growing up, he and his dad would take trips to the station or coaling towers in Warsaw, Indiana. On these trips, young Jim's head was filled with the visions of passenger trains and mighty steam locomotives being filled with coal and sand.



*Jim's 2035 Freight Set*



*Coaling Tower*

In 1994 Jim showed his original Lionel set to his friend, Dave Aholt. Dave explained that “the drivers are all messed up”. Well, Dave was able to fix the engine and sparked the beginning of Jim’s train collecting obsession. Encouraged by his wife who told him that he “needed to get a hobby”, Jim began to associate with several train collectors in the Saint Louis area. Eventually, Dave Aholt, Rob English and Jon Lundvall encouraged Jim to join the TCA in 2005. Jim joined the TCA to meet more train guys and to go to York. Dave Aholt helped build Jim’s first layout in 2006. (Yes, you read that right.)

Jim has attended the York train meet twelve times. He has increased his collection every trip! A couple of his memories include finding the components for his original Marx set. One his favorite memories is when he bought the exceedingly rare MTH Cleveland, Cincinnati, Chicago, and St. Louis 4 car passenger set. Jim explained that he had to make two trips to the ATM to buy the set. A picture of one of Jim’s cars is below. Jim’s paternal grandfather worked for that railroad from the mid-30s to his death in 1950. Note the C.C.C.&ST.L. in upper right corner of the car. Ten years later, in 2015, Jim was able to complete the set when the C.C.C.&ST.L. baggage car and observation popped up on eBay. Way to go Jim!



*Cleveland, Cincinnati, Chicago & St. Louis car*

According to Wikipedia, the Cleveland, Cincinnati, Chicago, and St. Louis Railway, also known as the Big Four Railroad and commonly abbreviated C.C.C.&St.L., was a railroad company in the Midwestern United States. It operated in affiliation with the New York Central system.

Its primary routes were in Illinois, Indiana, Michigan, and Ohio. At the end of 1925 it reported 2,391 route-miles and 4,608 track-miles; that year it carried 8180 million net ton-miles of revenue freight and 488 million passenger-miles. The Big Four's lines were later incorporated into the Penn Central in 1968 with the merger of New York Central and the Pennsylvania Railroad.



In 2012 Jim and his family moved to a new home in Fenton, Mo. Fenton is one of the many St. Louis suburbs. Again, with his friend Dave Aholt, they began building the bench work for a 14' x 24' layout. With his wife's approval the layout extended through the wall! (See upper right-hand corner of the picture at the right.)

The layout and layout room feature finished wood floors, sanded and stained side boards with finished shelving under the edge of the layout. The track plan includes 2 main lines in an "oval" shape. As can be seen in picture to the right, the track plan also includes a large and long yard.

The track is all traditional Lionel tubular track except for Ross switches in the yard. All the curves are O-72. As can be seen in the pictures of his layout, Jim has developed modeling and scenery skills in addition to his track planning expertise. More pictures of Jim's layout can be found by clicking on the following Photo-Bucket [LINK](#).

Jim, white shirt at the right, considers himself more of an operator than collector. When asked about the future of the hobby, Jim commented that York is getting smaller, spaces are wider and there are gaps between the tables. Today's middle aged men do not have the same toy train experiences as most of us did. He finished our interview with a quote from John Billingham (a well-known St. Louis Collector, Repairman, tables at train meets, etc.) **"The best part of a model train is building the layout"**.

Our congratulations to Jim for the excellent layout. Also, our thanks for all he does to support the TCA through his activity in the St. Louis Gateway Chapter and the Ozark Division.



Recently I asked David E. Smith #82-17781, President of the Heart of America Chapter, why he joined TCA. Here is his response.

“My Dad and I joined in 1982 because we had met many people who were TCA members. Back in 1982 to join you had to have 2 members sign your application.

Lee Hanssen was one of the people that signed for us. I joined to go to the four swap meets and home tours that Ozark division had each year. I also enjoy the TCA magazines that I receive. “



## Chapter Activities

The Heart of America chapter held their Annual Meeting at the Missouri Model Railroad Museum in Independence MO. President David Smith, and Secretary/Treasurer, Darin Grant conducted the business meeting. Several members displayed and discussed models brought to the meeting for a show and tell. The food was excellent, especially the cookies and cake. Door prizes were distributed at the end of the meeting.



*President David & Sec/Treas Darin*



*Good Attendance from Membership*





In conjunction with Don and Judy Miller, the HOA chapter co-hosted an open house at the Miller's residence. Turnout was good with roughly 100 in attendance. A wide range of ages attended the Miller's annual "Christmas Trains Open House." A few pictures from the event are shown below, more pictures can be found at this Photo-Bucket [LINK](#).



If you board the wrong train, it is no use running along the corridor in the other direction.

[Dietrich Bonhoeffer](#)

# Train Related Activities

Edited by Darin Grant 11-65910, VP Ozark Division

**January 27-28th, 2024:** Great Train Show  
Saturday 10:00am – 4:00pm, Sunday 10:00am – 4:00pm  
St. Charles Convention Center  
St. Charles, MO

**February 3-4th, 2024:** Wichita Train Show & Swap Meet  
Saturday 9:00am – 5:00pm, Sunday 11:00am – 4:00pm  
Cessna Activity Center  
2744 George Washington Blvd.  
Wichita, KS  
<https://www.nmrachisholmtraildivision.org/best-train-show.html>

**February 17th, 2024:** Heartland Toy Train Show  
Saturday 9:00am – 3:00pm  
Expo Center - Payne County Fairgrounds  
4518 Expo Cir E., Stillwater, OK 74075  
<http://www.heartlandtoytrain.org>

**February 17-18th, 2024:** Lincoln Area Railway Historical Society Annual Train Show  
Saturday 9:00am – 5:00pm, Sunday 10:00am – 4:00pm  
Lancaster Event Center  
4100 N. 84th St., Lincoln, NE 74075  
<https://larhs.org/annual-show/>

**February 24th, 2024:** Great NWA Model Train Show  
Saturday 9:00am – 4:00pm  
Benton County Fairgrounds  
Bentonville, AR 72712

**March 2-3rd, 2024:** 22nd Annual Lawrence Train Show & Swap Meet  
Saturday 9:00am – 5:00pm, Sunday 9:00am – 3:00pm  
Crown Toyota  
3400 South Iowa St.  
Lawrence, KS 66046

**April 6th, 2024:** Greater Tulsa Area Train Show  
Saturday 9:00am – 3:00pm  
Creek County Fairgrounds  
17808 W OK-66  
Kellyville, OK 74039  
<https://www.ttos-soonerdiv.org/train-shows.html>

**April 6-7th, 2024:** Nebraska-Iowa Railroaders Annual Train & Toy Show  
Saturday 9:00am – 4:00pm, Sunday 9:00am – 2:00pm  
Papillion Landing Field House  
1022 West Lincoln Street  
Papillion, NE 68046  
<https://nebraskaiowarailroaders.com/>

**April 13-14th, 2024:** Festival of Trains Model Train Show  
Saturday 9:00am – 5:00pm, Sunday 10:00am – 4:00pm  
OKC Fairgrounds  
The Pavilion, 3212 Wichita Walk  
Oklahoma City, OK 73107  
<https://www.festoftrains.com/>

**April 18- 20th, 2024:** York Train Meet Eastern Division TCA  
York State Fairgrounds, 334 Carlisle Ave, York, PA 17404  
<https://www.easterntca.com/>

**April 27-28th, 2024:** Herington Railroad Days  
Saturday 9:00am – 5:00pm, Sunday 10:00am – 4:00pm  
Herington Community Building  
810 South Broadway  
Herington, KS 67449  
<https://heringtonhistory.org/heringtonrailroad-days/>

**June 1-2nd, 2024:** Center of the Nation Model Railroad Expo  
Saturday 9:00am – 5:00pm, Sunday 10:00am – 3:00pm  
Kansas State Fairgrounds  
Pride of Kansas Building  
Hutchinson, KS  
<http://www.kansascentralmodelrailroaders.org/train-show.html>

**June 15-23rd, 2024:** 70th National TCA Convention  
Lancaster Marriott at Penn Square  
Lancaster, PA  
<https://www.tcatrains.org/national-tca-convention/>

**July 8-14th, 2024:** Lionel Collectors Club America (LCCA) Annual Convention  
Omaha, NE  
Details available February 2024

**July 13th, 2024:** Heartland Toy Train Show  
Saturday 9:00am – 3:00pm  
4518 Expo Circle E.  
Stillwater, OK  
<https://www.ttos-soonerdiv.org/train-shows.html>

**July 21-27th, 2024:** Lionel Operating Society (LOTS) Annual Convention  
Lawrence Kansas Model Train Show  
Saturday, July 27th 10:00am – 3:00pm  
DoubleTree by Hilton Hotel  
200 McDonald Dr.  
Lawrence, KS 66044  
<https://lots-trains.org/>

**September 20-21st, 2024:** Ozark Model Railroad Association Annual Train Show  
Friday 4:00pm – 8:00pm, Saturday 9:00am – 3:00pm  
Ozark Empire Fairgrounds Central Events Center  
3119 North Grant Avenue  
Springfield, MO 65803  
<http://www.omraspringfield.org/>

**October 12th, 2024:** Heartland Toy Train Show  
Saturday 9:00am – 3:00pm  
500 E. Choctaw Ave.  
Chickasha, OK  
<https://www.ttos-soonerdiv.org/train-shows.html>

**October 17-19th, 2024:** York Train Meet  
Eastern Division TCA  
York State Fairgrounds, 334 Carlisle Ave, York, PA 17404  
<https://www.easterntca.com/>

## Ozark Division Officers

Robert M. English 96-43303 – President  
5 Exmoor Dr.  
Saint Louis, MO 63124  
314-989-9479  
[englishes@charter.net](mailto:englishes@charter.net)

Darin Grant 11-65910 – Vice President  
11326 W 132nd Terrace  
Overland Park, KS 66213  
913-486-2131  
[dgrant@kc.rr.com](mailto:dgrant@kc.rr.com)

David Smith 82-17781 -President HOA Chapter  
1022 S. Glenwood Avenue  
Independence, MO 4053-162  
913-980-7915  
[dksmith13312@comcast.net](mailto:dksmith13312@comcast.net)

David M. Osborn 75-7280 – President Gateway  
Chapter  
633 Highview Circle Drive  
Ballwin, MO 63021  
314-808-5708  
[osborns@swbell.net](mailto:osborns@swbell.net)

Don Miller 06-59842 – Past President, Communications  
Editor  
12715 Grant Street  
Overland Park, KS 66213  
913-814-9107  
[olathedonm@aol.com](mailto:olathedonm@aol.com)

Bradley Marples, M.D. HE95-41819 – Director  
5125 SW Redbud Lane  
Topeka, KS 66606  
785-271-5530  
[bmarples@gmail.com](mailto:bmarples@gmail.com)

Jon R. Lundvall 75-8379 - Historian  
810 Windmill Dr.  
Ballwin, MO 63011  
314-239-7996  
[jonlstrains@netscape.net](mailto:jonlstrains@netscape.net)